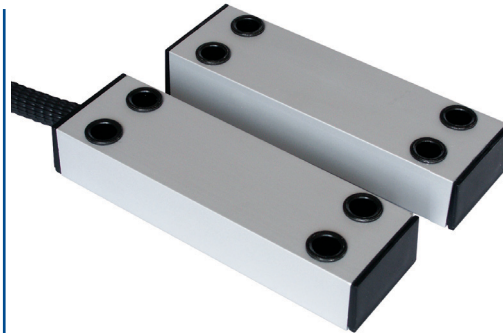


Long-distance magnetic contact • Series 1005

- Compliant with and certification pending in accordance with EN50131-2-6
- Surface mounting
- Very long operation distance
- Indoor use
- Suitable for frames of any material
- Wire connection
- With anti-tampering wire loop

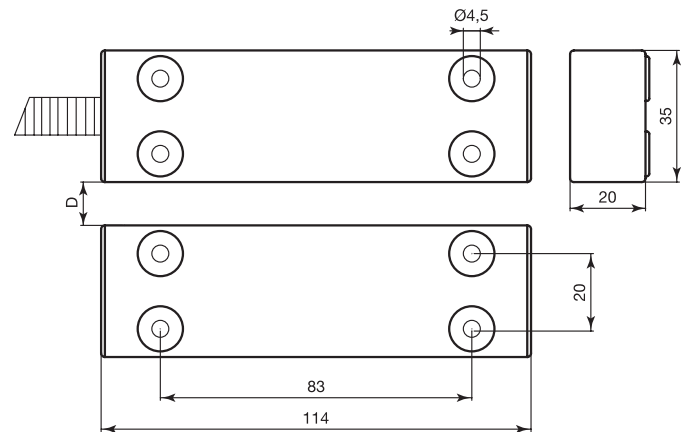
Aluminium magnetic contact for surface mounting. It derives from the High-Security series 1000, featuring the same look, but it was developed to have a very long operating distance for all those applications where the frames have large play and tolerances, and therefore a normal magnetic contact could cause false alarms.



It can be applied to frames of any material, also iron. The connection is with anti-tampering wire loop and cable sheathing of plasticized steel.

General specifications

Housing material	Anodized aluminium
Operation	Reed contact with NC output with near magnet
Type of connection	Wire or terminal (2 for contact + 2 for anti-tampering)
Operating temperature	-15°C ÷ +55°C
IP Degree	IP 40
Standard equipment	Tamper-proof caps, cable protection sheathing with 10 mmdiameter, 1.7 m length, steel with black PVC coating; anti-tampering wires
Packaging	1 pc. / package



Order codes

Code	D max (no iron)	D max (on iron)	Connection type	Max voltage	Max current	Max power	N° wires	Cable length	Safety grade	Environmental class	Package weight
1005-CSA	55 mm	30 mm	NC*	200 Vdc	1 A	10 W	4	2,0 m	2	2	0,56 Kg

The "Safety grade" and "Environmental Class" are two new classifications introduced by the EN50131 regulation, for further information see on page 66.

D max: maximum installation distance

* With near magnet

The indicated maximum voltage data refer to the reed bulbs inside the contacts. However the product must be used within the very low voltage limits (max. voltage 74 Vdc - 49 Vac).

Accessories available (see page 28)

AG-10 | Black PVC-coated steel sheath - 10 m