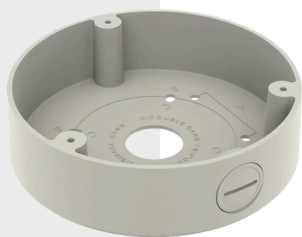


SBF-100B1



SBF-100B1

Back Box

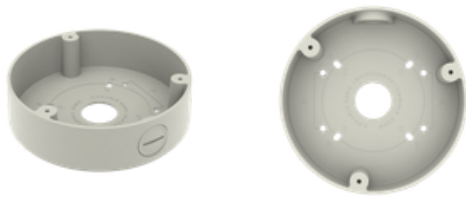


Key Features

- Aluminum
- Can be used with PNF-9010R/9010RV/9010RVM, SNF-8010/8010VM

SBF-100B1

Back Box

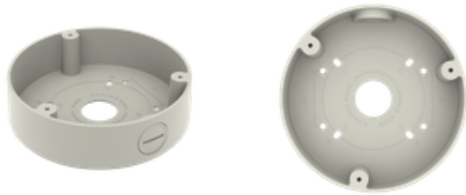


Specifications

Mechanical	
Color	Ivory
Material	Aluminum
Product dimensions / weight	ø149.2x40mm / 400g
Conduit hole	19.1mm(3/4")(M25)
Supported products	XNF-8010RV ※ For further compatible models, please visit our website or use Toolbox

SBF-100B1

Back Box



CAD

Unit: mm [inch]

