



SBO-147BA

Conduit Hole Adaptor

FC

UL
LISTED

CE

ERC



Key Features

- Material: Cover- Aluminum, Top cover - Polycarbonate(PC)
- Dimensions: 48.5(W)x41(H)x56.7(D)mm(1.91x1.61x2.23")
- Weight: 45g(0.1lb)
- Color: White
- Conduit hole: 19.1mm(3/4")(M25)

SBO-147BA

Conduit Hole Adaptor



Specifications

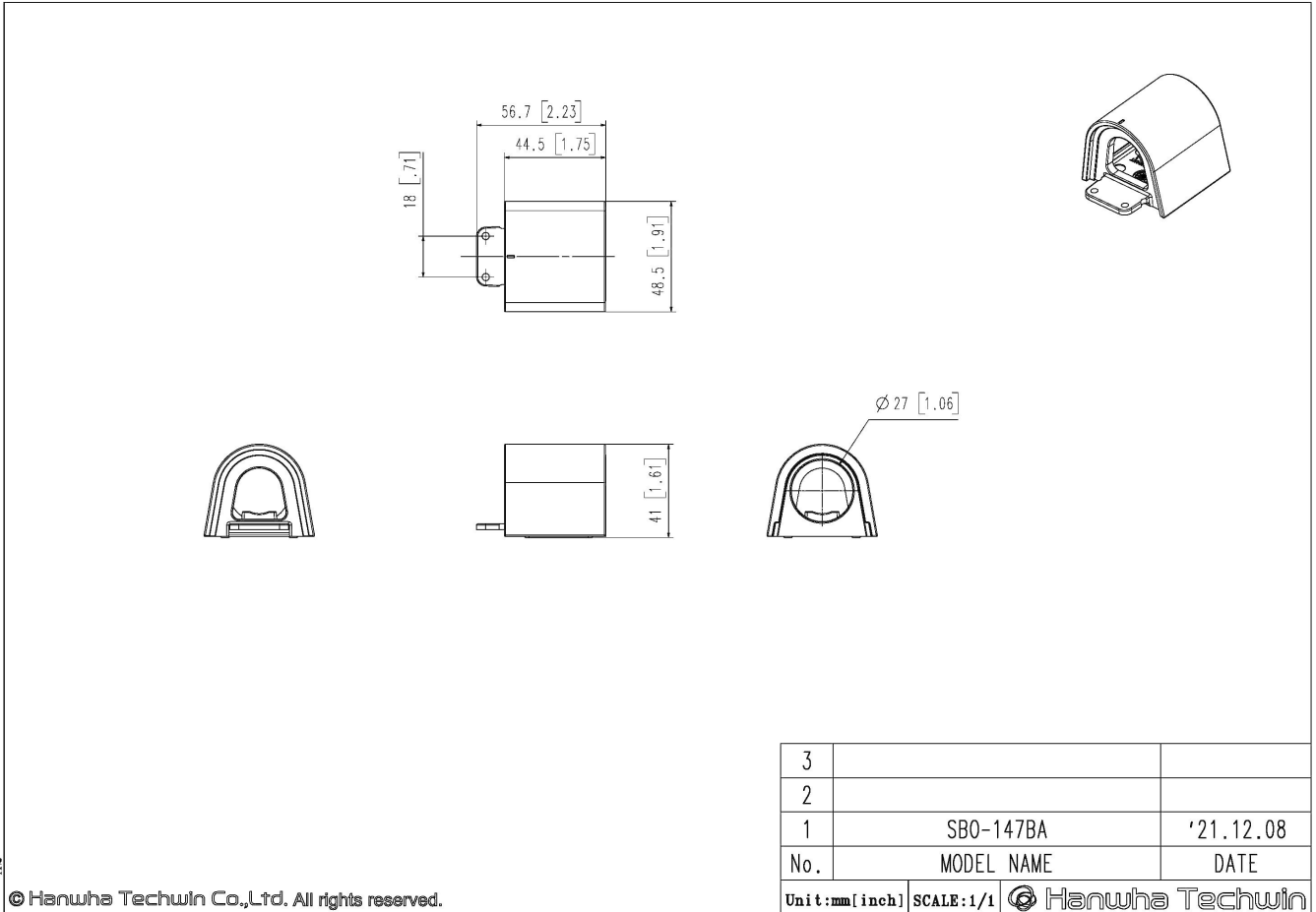
SBO-147BA

Conduit Hole Adaptor



CAD

Unit:mm [inch]



A2

© Hanwha Techwin Co.,Ltd. All rights reserved.