

SBP-300KM1

Corner Mount



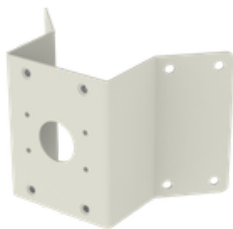
Key Features

- Material: Aluminum
- Dimensions : 280(W)x183(H)x159(D)mm(11.02"x7.20"x6.26")
- Weight : 800g(1.76 lb)
- Color : Ivory
- Supported products : XNV-6120R

※ For further compatible models, please check out Wisenet Toolbox Plus

SBP-300KM1

Corner Mount

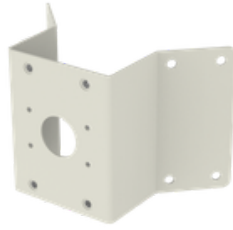


Specifications

Mechanical	
Color	Ivory
Material	Aluminum
RAL code	RAL9003
Product dimensions / weight	280x183x159mm / 800g
Max. load	20kg
Supported products	SBP-300WM, SBP-300WM1 ※ For further compatible models, please visit our website or use Toolbox

SBP-300KM1

Corner Mount



CAD

Unit: mm [inch]

