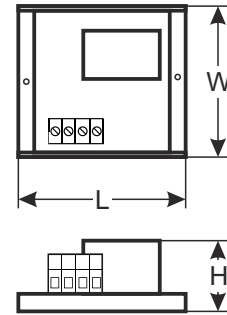
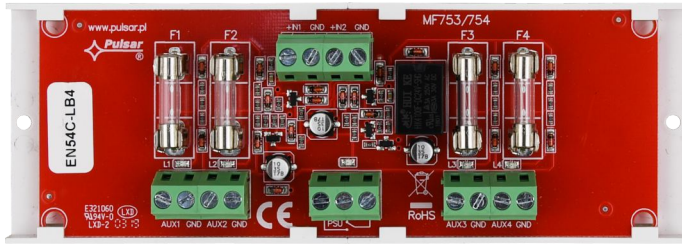


CODE: **EN54C-LB4** v.1.0/1
 NAME: **EN54C LB4/0,5A/FTA fuse module**

EN



Features:

- supply voltage 20 ÷ 30 V DC
- four outputs independently secured with melting fuses
- technical relay output of the PSU indicating fuse activation
- optical indication of failure
- dedicated to fire alarm power supplies of EN54C series
- warranty - 5 years from the production date

DESCRIPTION

The fuse module is designed for power distribution in the power supply units of EN54C series. It contains two power inputs, IN1 and IN2, connecting to the power supply and four independently secured outputs AUX1÷AUX4. The IN1 input supplies power to the AUX1 and AUX2 outputs, while the IN2 input supplies power to the AUX3 and AUX4 outputs. Each AUX output has short-circuit protection (SCP) in form of F 0,5 A melting fuse (it is possible to install F1 A fuses - not included). Outputs condition is indicated by L1÷L4 LEDs. Fuse activation is indicated by: turning off the corresponding LED: L1 for AUX1, L2 for AUX2 etc., technical output relay type and PSU LED. PSU technical output can be used for remote control of the parameters, e.g. external optical indication.

Supply voltage	20 ÷ 30 V DC
Output voltage	$U_{AUX} = U_{IN}$ (according to supply voltage)
Current consumption	15 ÷ 25mA @ $U_{in}=20 \div 30$ V DC
Number of power inputs	2 (IN1, IN2)
Number of power outputs	4 (AUX1 ÷ AUX4)
Protection: - Short-circuit protection SCP	4 x F 0,5 A (it is possible to install F1 A fuses - not included)
Optical signaling of operation	L1 ÷ L4 - outputs condition AUX1÷AUX4 (green LEDs) PSU - failure indication (red LED)
Fuses F1 ÷ F4	F0,5 A ÷ F1 A
PSU technical output	relay: 1 A@ 30 V DC/50 V AC
Operating conditions	2nd environmental class, -10°C ÷ +50°C
Dimensions (LxWxH)	110,5 x 45 x 32 [mm]
Net/gross weight	0,10kg / 0,12kg
Storage temperature	-20°C...+60°C
Additional equipment	Spacers x 2, glass fuses F0,5 A x 2

The overview diagram of the connection between the EN54C-LB4 fuse module and the PSU of the EN54C series.

