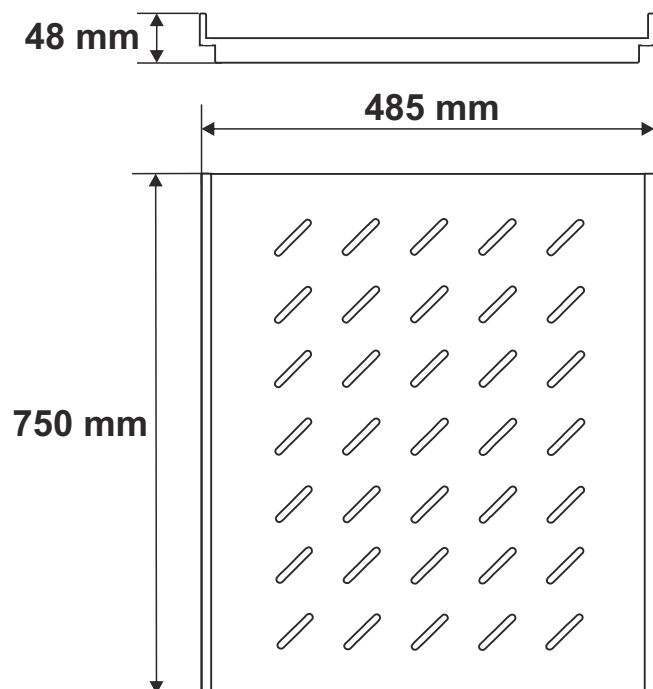
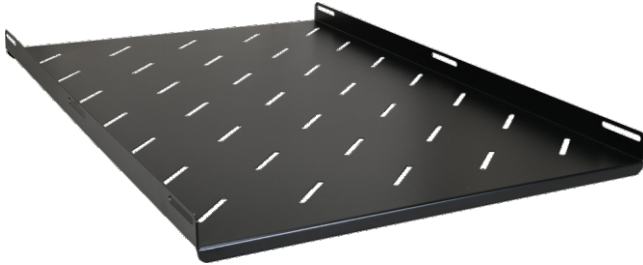


CODE: RAPS1000 v1.0/l
 NAME: Fixed shelf 485x750 for RACK cabinet, type RS/ZRS

EN



INTENDED USE

The fixed shelf is intended for a 1000mm deep RACK cabinet, type: RS/ZRS. Due to the shelf, the RACK cabinet can accommodate devices that are not housed in a RACK 19" enclosure.

SPECIFICATIONS

| | |
|---------------------------------|--|
| Dimensions of the shelf: | W=485, H=48, D=750 [mm, +/-2] |
| Net/gross weight: | 4,05 / 4,25 [kg] |
| Materials: | 1,2 mm steel sheet, RAL 9004 |
| Static load: | 60 kg |
| Use: | inside |
| Notes: | - four-point fixing to the side RACK rails - mounting set includes: 4 M6 screws, cage nuts, plastic washers |