

MADE TO PROTECT

Satel®



INTEGRUM

SECURITY SYSTEMS
MANAGEMENT

APPLICATION

The **INTEGRUM** is a dedicated software for management of a large number of distributed installations of security systems

Owing to its extensive functionality, intuitive management methods and flexibility of building and expanding the system structure, the **INTEGRUM** meets the requirements for large and medium-sized multi-unit enterprises, such as chain stores, bank branches, customer service centers, forwarding networks and other organizations.

KEY ADVANTAGES



TECHNICAL aspects



Simplified security supervision because you can combine multiple premises into one integrated, efficiently functioning system.

Quick response to detected events because you can verify online the actual status of individual premises in the system.

Cataloging devices owing to automatically created list of components and their firmware versions.

ECONOMIC aspects



Optimization of system implementation and development costs owing to flexible licensing system.

Real savings owing to the reduced cost of operating and managing the distributed structure of premises.

Verification of incurred expenses because you can always view the log of events in premise.

BUSINESS aspects



Easy administration owing to a single common database of users from multiple premise.

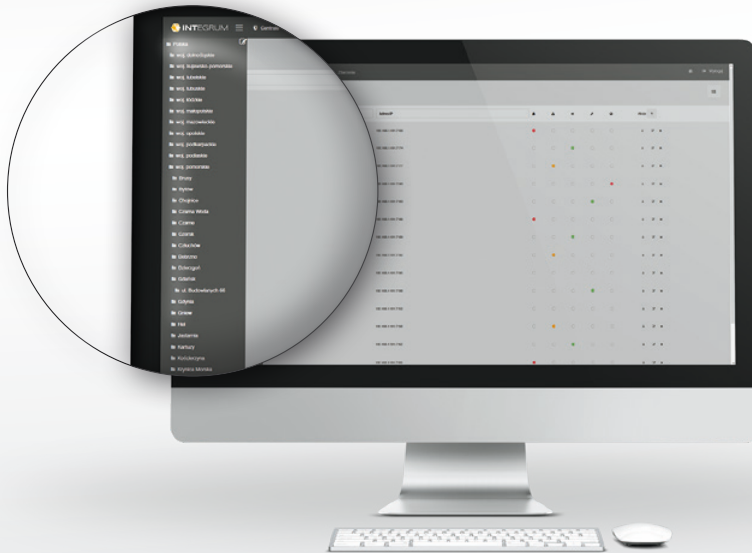
Simple and effective management owing to the intuitive interface.

System expandability by adding further security areas owing to scalable design solution.

Flexible system creating capability due to the distributed administration capable structure, which replaces the locally used GUARDX systems.

SPECIAL FEATURES OF THE SYSTEM

SPECIAL FEATURES OF THE SYSTEM



To facilitate management, the rule has been adopted that all elements stored in the system are unequivocally assigned to a specific branch of the tree structure. There is no limit to the complexity of the structure.

All the elements are divided into 3 logical groups. These are the views of control panels, users and events.

Each of the views contains a list of registered premises with the possibility of filtering by basic criteria, and detailed panels for adding and editing premises, as well as managing dependencies between them.



A+B+C

Views for the **Administrator** of security department of the entire organization

B+C

Views for the **Operator** of security department in selected region

C

View for the **Manager** of selected premises

The **intuitive dashboard** makes it possible to review the system state using a single view and thus quickly evaluate the state of premises and entire organization.

Flexible match

- scalable system managed from multiple locations at the same time
- distributed premises clustered into one centrally managed system
- unlimited number of premises in a variety of configurations of system structure
- central database of users, settings, events and state of premises

Full operational security

- system of multilevel storage of user data and event history
- automatic download of "outstanding" data after connection is restored
- module for monitoring control panel configuration changes

Reliable and secure communication

- bi-directional data transfer via TCP/IP
- advanced encryption of transmitted data
- automatic notification of changes in the state of premises

Simple and intuitive interface

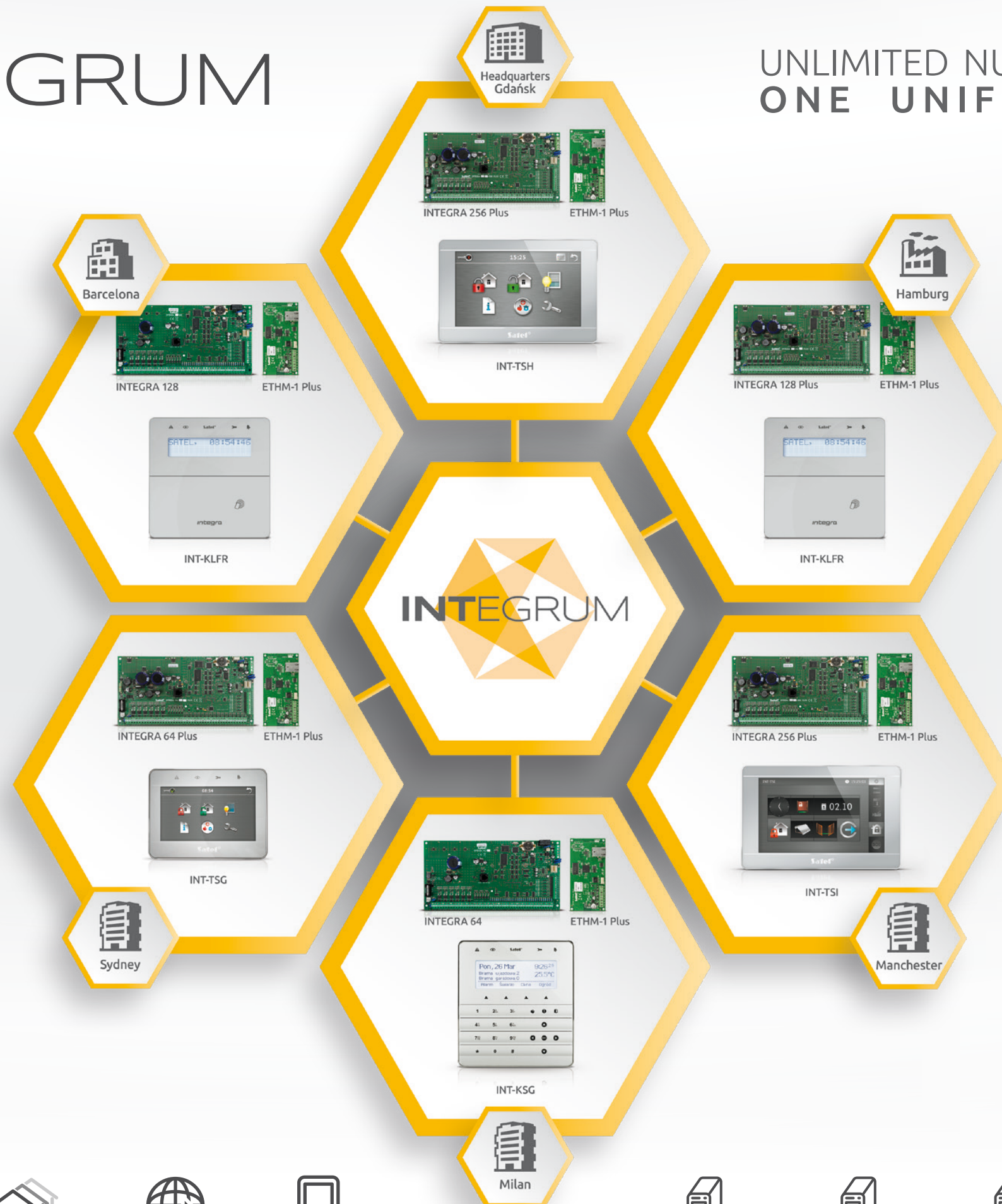
- access to the system from web browser
- can be operated from mobile devices
- bidirectional connection for transmitting data in real time without the need to refresh the page

Distributed structure

- grouping into regions and premises
- configuration of access to a portion of the system
- ability to control and configure the system from any location in the world:
 - system management by multiple administrators
 - supervision of the system
- delegation of region management authority

Dashboard

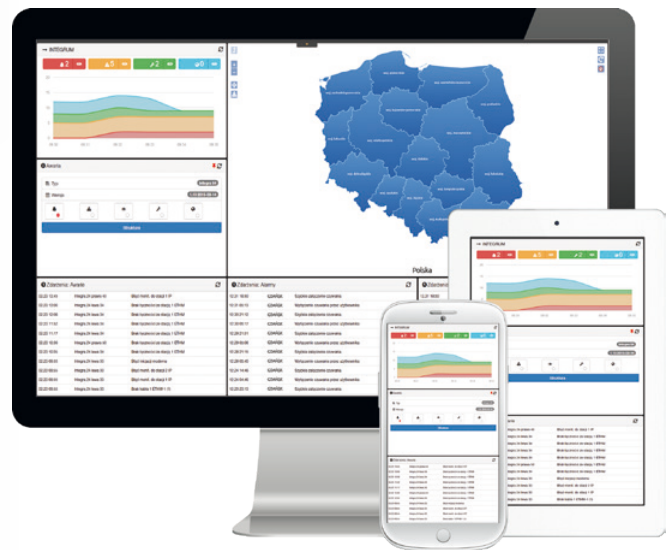
- visualization of the system state
- system control from a single view
- customizable views of maps/plans corresponding to the hierarchy adopted in the organization
- modern technology to reduce delays in message delivery





The **INTEGRUM** is a dedicated software for companies wishing to effectively manage a large number of dispersed installations of technical systems. Its components are installed on servers running Linux or Windows and may, depending on the size of the system, reside on a single machine or even on several separate ones.

Simplicity and ease of use of the system are guaranteed by an advanced application, available remotely via a web browser. The application allows for presentation of interactive and smoothly operating maps (**WebGL**) and use of a permanent connection to provide real-time information on the state of premises (**WebSocket**). This makes it easy to manage the system from anywhere in the world, using both desktop and mobile devices.



Employment of the server based on J2EE technology, used in enterprise's server platforms, has made it possible to create an application that meets the high requirements for flexibility, scalability, and security of the system.

Each of the presented elements can be installed as open source software. You can also purchase commercial support from the manufacturer.

SYSTEM STRUCTURE

INTEGRUM Server



INTEGRUM Server software is responsible for communication with the control panels installed in premises.

INTEGRUM AppServer



Data are transmitted to the INTEGRUM AppServer. This component is the central managing element with storage module for data reflecting the current state of the premises.

INTEGRUM Web



The INTEGRUM Web application server allows you to inspect the state of premises and to manage the user rights from anywhere in the world.

Communication



Communication takes place via encrypted TCP/IP transmission. AES192 algorithm is used.

Browser



It allows you to easily manage the system from any location in the world by using either desktop computer or mobile device.

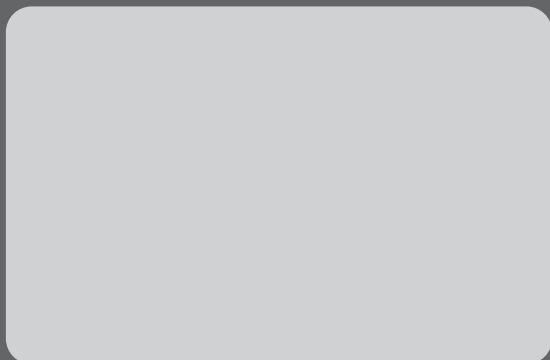




MADE TO PROTECT

ul. Budowlanych 66, 80-289 Gdansk, Poland
tel. +48 58 320 94 00; fax + 48 58 320 94 01
e-mail: trade@satel.pl

www.satel.eu



The manufacturer reserves the right to change the specification and technical data of devices.
Images shown are for general information only and may differ from actual products.
U-INTEGRUM-EN0120

30 YEARS OF EXPERIENCE

Professional protection of each type of premises, as well as people staying therein, through advanced, yet functional and cost-effective solutions – these few words may serve as the shortest description of the mission of SATEL, a manufacturer of security systems with involvement of 100% Polish capital. Due to integrity in business and a special emphasis on high quality and a wide range of products offered, the SATEL brand has been highly appreciated in the industry for 30 years.

This philosophy of management and hard work of more than 300 SATEL's employees produce tangible results. The wide range of over 400 offered products provides countless opportunities to create security, home automation, fire alarm, access control and monitoring systems, tailored to the individual needs of each user. At the same time, these systems meet all requirements prescribed by Polish and international regulations and industry standards.

Bringing the functionality of devices into line with current requirements and expectations of the market with the use of the latest technologies is one of the main objectives of SATEL. For this reason the design and production departments of the Company are continuously being modernized and expanded. A natural consequence of all actions aimed at the production of top-quality devices was the introduction of the quality management system conforming to ISO 9001 in 2002. Regardless of this certification, SATEL also carries out a full functional test of all products leaving the production line, thus ensuring reliability of the manufactured devices. Focusing on modern design and attaching importance to the highest levels of quality and functionality of its products, SATEL has gained many satisfied customers not only in Poland but also in more than 50 markets worldwide.